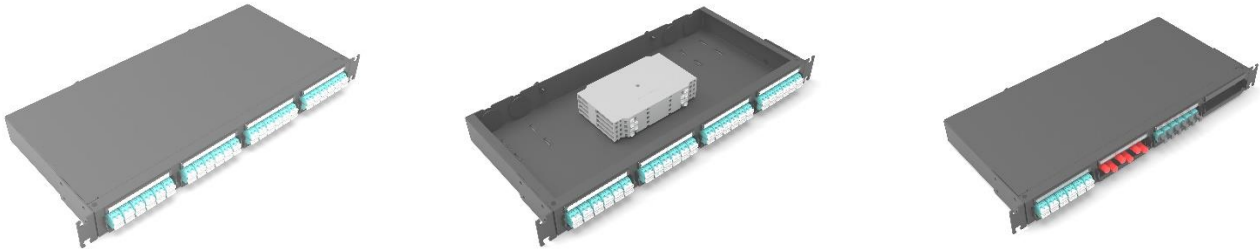


## Fixed HD Fiber Optic Patch Panel, 19" 1U



### Product Description

PAMIX Fixed fiber optic patch panel is a high density rack type enclosure. It provide user with four front slots enclosure that reach 96 cores capacity. The idea behind its new design is to accept more than one type of connector at an economic price. It can accommodate four front slot panels each hold different type of connectors. PAMIX fixed HD patch panel designed to be installed on rack cabinet's rails.

### Product Features

- 19", 1U Enclosures.
- Metal powder coated body.
- Fixed Type.
- Rack installation.
- Connectors: LCD, ST/FC, MPO
- Four rear cable entries.
- Fixed mounting brackets.
- Removable snap-in latch front panels with different connector types.
- Front panels accept flanged and flangeless adapters (with screw or without screws).
- Splice tray and holders are included.

### Product Specifications

- |                 |   |
|-----------------|---|
| - Body          | SPCC; Powder coated.                              |
| - Color         | Black RAL9005.                                    |
| - Installation  | Rack.   |
| - Type          | Fixed.  |
| - Max. Capacity | 96 fibers.  |
| - Cable Entries | 4 rear cable entries.                             |
| - Fiber Type    | Can be used with Single Mode or Multi Mode Fibers |
| - Size          | 1U X W482.6mm X D234.5mm.                         |
| - Standards     | TIA/EIA -568-C.8 Compliant, RoHS.                 |
| - Environmental | -25°C to 50°C                                     |

## Ordering Information

Product Description	Article Number
- Fixed HD Fiber Patch Panel, 1U	1016371
- Front Plate 12 LCD	1016372
- Front Plate 6 MPO	1016373
- Front Plate 8 MPO	1016374
- Front Plate 6 ST	1016375
- Front Plate blank	1016376