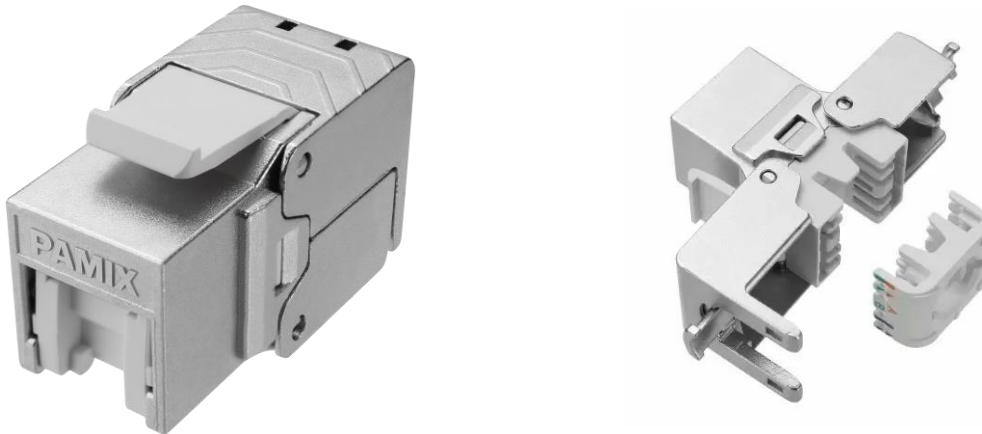


Elite Cat 6A Keystone Jack, RJ-45 Female, shielded with dust cover



PAMIX Elite keystone jack is a CAT6A RJ-45 female, 4PPoE can deliver up to 90 Watt at PD side with 4 energized pairs, shielded with dust cover. It provide excellent voice, data and video signal transmission. It supports 10G Ethernet application, frequency up to 500 MHz. Its 360° shielding minimizes EMI/RF noise and alien cross talk. Dust cover was precisely designed and fixed to protect internal contacts and keep them clean. Its' one way fixing cap prevent installers' incorrect wiring.



FORCE Technology Verified

ANSI/TIA-568.2-D

Connecting Hardware

General Construction

Solid Zinc die cast housing with nickel plating, dust proof shutter, spring contacts are Phosphor bronze plated with 50μ gold for excellent stable performance. Polycarbonate cab and IDC housing material, Compatible with standard cable OD from 5.5 to 8.5 mm AWG24 to AWG22 solid and stranded. Its 180° housing wings make termination easy and fast.

Its special construction design of the IDC housing prevent short circuit possibility occurrence, the wall next to IDC rows is high enough to isolate the terminated cable end from the jack metal housing.

Technical Information

- Cat 6A 10G 500MHz class EA performance
- RJ45-Jack, 8P8C connector
- Snap in connector fixing
- Compliance with the component standard IEC 60603-7-51.
- Support PoE++ & 4PPoE applications (IEEE 802.3af, 802.3at, 802.3bt)
- Solid cable termination 22AWG to 24AWG
- Stranded cable termination 22AWG to 26AWG
- 5.5mm – 8.5mm cable OD
- Support EIA/TIA 568 A & B termination standards and label color code
- Tool-less jack module
- Tool free mounting in patch panels
- Movable wings' necks ensure 360° fully cable shielding locked by plastic tie
- Re-usable 20 cycle in case of pad termination or cable damage
- Dust proof shutter for better pins protection
- Operating temperature -10 to 60 °C
- Storage temperature -40 to 70 °C
- Snap in force < 30N

Standards

Meeting connector standards IEC 60603-7-51, IEC 60603-7-1, IEC 60512-99-002 and cable standards ISO/IEC 11801-1, ANSI/TIA 568-2-D for Class EA, IEEE 802.3bt Type 4 PoE++ (4PPoE) 100W, ANSI/TIA-1096-A, UL 1863, RoHS/REACH Compliant

Ordering Information

Description	Article Number
Elite Cat 6A Keystone jack RJ-45 shielded with dust cover, AWG22 – AWG24	1005210
Elite Cat 6A Keystone jack RJ-45 shielded with dust cover, AWG23 – AWG26	1005211

Related Products

Description	Article Number
1U 24 ports Patch panel STM-1P	1005011
1U 24 port Patch panel, strain relief STM-ARM	1005002
1U 48 port Patch panel, strain relief STM-ARM	1005003
0.5U 24 port Patch panel, strain relief STM-ARM Metallic	1005006